



CARUTEST® ANALYZER

Municipal Drinking Water Data Sheet

The CARUTEST® Analyzer is designed to continuously analyze residual levels of CAIROX® potassium permanganate or CARUSOL® liquid permanganate in drinking water.

TECHNICAL DATA

- Permanganate, mg/L
- Amperometric Continuous Reading
- Auto Zero
- Continuous Cleaning System
- Auto Flush Mechanism
- 4-20 mA Output
- Adjustable Hi/Lo Alarms
- Digital Microprocessor



OPERATION

Liquid to be sampled is delivered to the amperometric cell at a rate of approximately 500 mL/min. The cell creates a small DC current proportional to the residual in the sample liquid. The DC current is taken to a digital controller where calibration ranges and display of residual takes place. The CARUTEST instrument is keypad operated and uses simple, menu driven instructions. The CARUTEST also has an auto scalable output, eliminating the need for output calibration after range selection. The Auto Zero function is standard and only available on the CARUTEST series. Electrodes are kept clean by a continuous motor driven mixer and plastic spheres. Hi-Lo alarms can be adjusted in the CARUTEST from 0 to full scale.

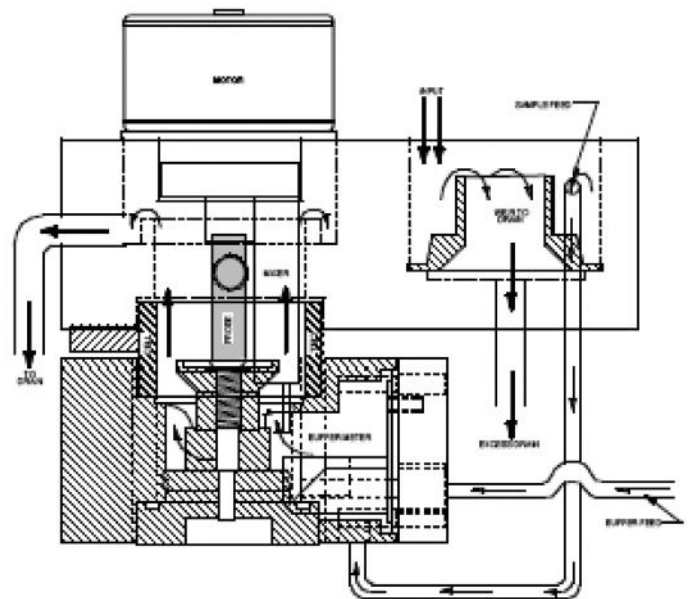
Other oxidants (such as chlorine, chlorine dioxide, and ozone) will interfere with the measurement of permanganate. Contact your Carus technical sales representative to assist you with determining the best sampling point for your application and system.





SPECIFICATIONS

Range:	0-2.0 mg/L
Measurement Electrode:	Gold
Sensitivity:	± 0.04 mg/L or 2% of range
Reference Electrode:	Copper
Resolution:	0.01 mg/L 0-2 range
Output Signal:	Isolated 4-20 mA DC
Response:	4 sec. from time of sample entry
Hi/Lo Alarms:	Adjustable 0-Full Scale
Display:	1-2 min. for FS step change
Four Relay Contacts:	1.6 A @ 120 VAC, Optional-8A @ 120 VAC
Sample Flow:	500 mL/min.
Electronics Enclosure:	NEMA 4X
Sample Temp:	35°-120° F
Power Requirement:	120 VAC, 60 Hz, 10w
Amb. Temp:	35°-120° F
Instrument Enclosure:	Not rated
Dimensions:	17 in. wide by 19 in. high by 9 in. deep



STANDARD EQUIPMENT

- Wall Panel Mounted Residual Analyzer
- Digital Indicator/Controller
- Tubing and Tubing Clamps



Carus Headquarters USA
 315 Fifth Street | Peru, IL 61354 | Tel +1 (815) 223-1500 | 1(800) 435-6856 | Fax +1 (815) 224-6697
 carusllc.com | salesmkt@carusllc.com

Carus Europe
 Calle Rosal 4, 1-B | Oviedo, Spain 33009 | Tel +34.985.785.513 | Fax +34.985.785.510

The information contained herein is accurate to the best of our knowledge. However, data, safety standards and government regulations are subject to change; and the conditions of handling, use or misuse of the product are beyond our control. Carus makes no warranty, either expressed or implied, including any warranties of merchantability and fitness for a particular purpose. Carus also disclaims all liability for reliance on the completeness or confirming accuracy of any information included herein. Users should satisfy themselves that they are aware of all current data relevant to their particular use(s).

Carus and Design, and CARUTEST® are registered trademarks of Carus.
 Responsible Care® is a registered service mark of the American Chemistry Council.



© 2024 Carus. All Rights Reserved.
 Rev. 8/2024